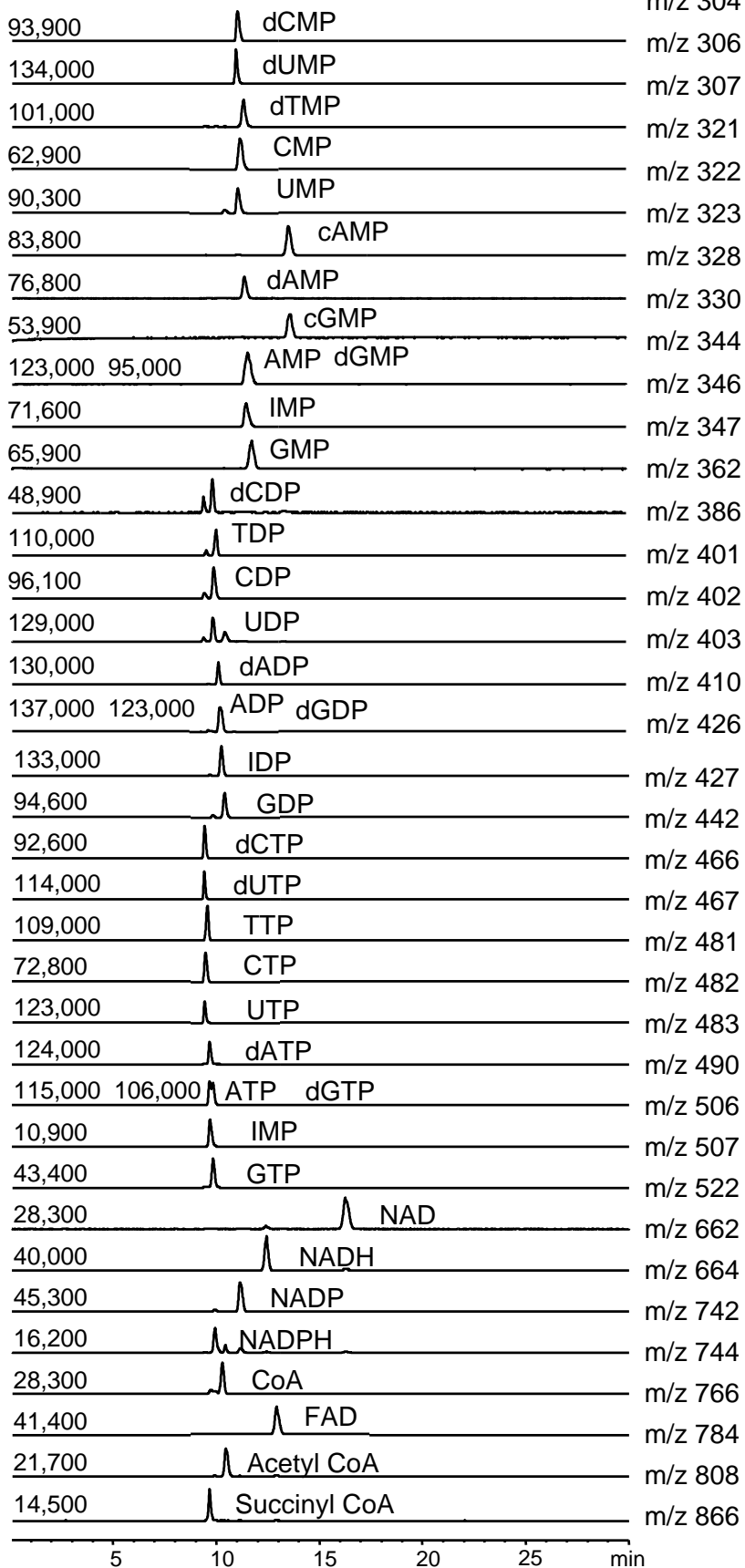


Supporting Information Figure 1 Determination of anionic metabolites at T-0.5 of *B. subtilis* 168In in the range from m/z 101 to 130. Experimental conditions are described in Experimental Section. The numbers in the upper left corner are the abundances corresponding to the Maximum peak at each m/z and the numbers on top of peaks are relative migration times normalized by PIPES (IS).



Supplementary Fig. 2 Determination of a standard mixture (100 μ M each) of nucleotides and nucleic acid derivatives using LC-MS/MS. The chromatogram shows the separation of the standard mixture components over a 25-minute period.